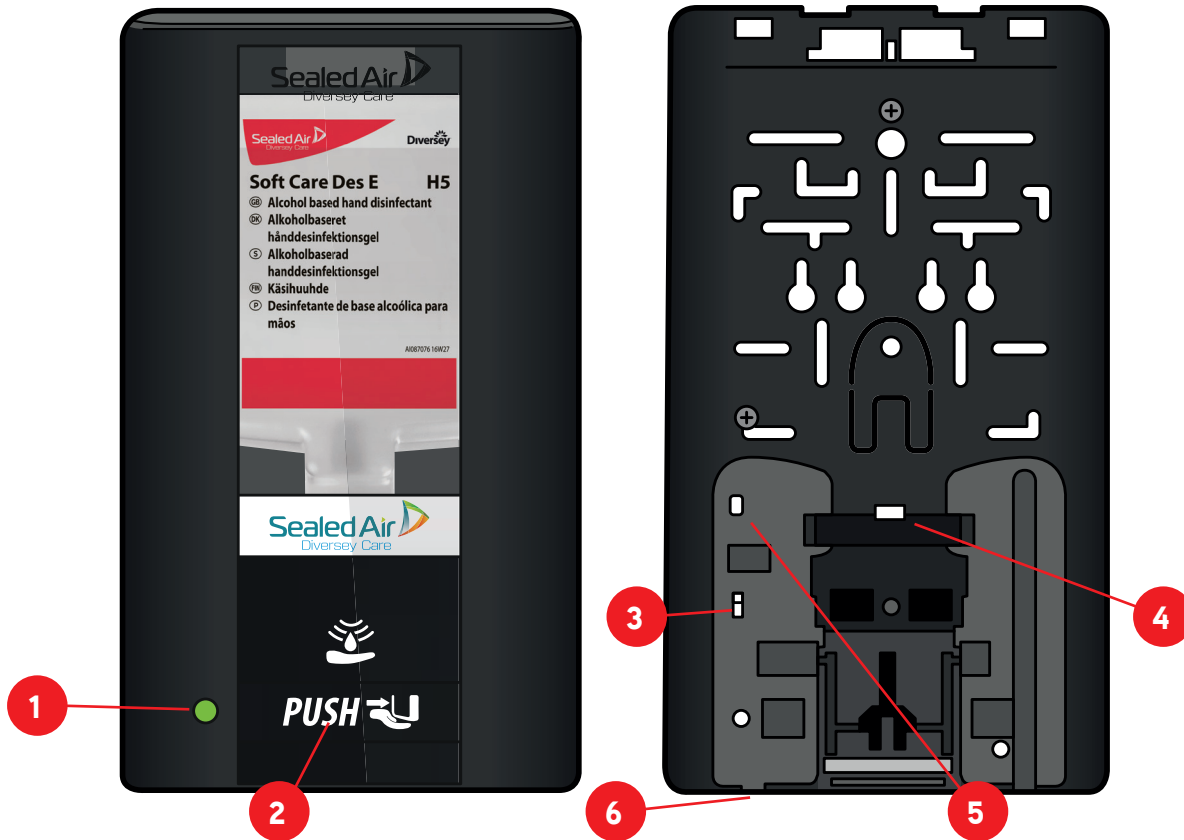


# IntelliCare™ Hybrid dispenser

## Troubleshooting guide



- 1. Power/Dosing/ Low Refill indicator
- 2. Low Battery indicator
- 3. On/Off and Dose Control switch
- 4. Refill Counter switch (Red)
- 5. Cover Open switch (Red)
- 6. IR Lens

### 1a: Power Indicator

**Action:** Blinking Green LED (every 3 sec)

**Description:** Standby mode, dispenser waiting to be used



### 1b: Dosing Indicator

**Action:** Solid Green LED

**Description:** Hand in Place / Dispenser in Use



### 1c: Low Refill Indicator

**Action:** Blinking Red LED (every 1 sec)

**Description:** Refill is Low



### 2: Low Battery Indicator

**Action:** Blinking Illuminating "PUSH" decal

**Description:** Batteries LOW / Install New Batteries



### 3: ON/OFF & Dose Control Switch

**Action:** Control Dose Amount per Use

**Description:** ON - 1: 1.0ML / ON - 2: 0.40 ML



### 4: Refill Counter Switch (RED)

**Action:** Activated when Refill Inserted

**Description:** Each time refill inserted the DOSE Count begins to ensure Low Refill Indicator (1C) blinks at the appropriate time



### 5: Cover Open Switch (RED)

**Action:** Extends when Cover Open

**Description:** Ensures that NO product is dosed when cover is OPEN



### 6: IR Lens

**Action:** Senses Hand to Automatically Dose Soap

**Description:** Keep Clean

